

SCHRÖDER
GROUP



HYDRAULIC FOLDING MACHINE
EVO Heavy Duty

EVO Heavy Duty – power package for thick sheets

The EVO Heavy Duty folder is our brand new hydraulic folding machine from Schröder. It is available in a working length of 3,240 mm and effortlessly bends up to 16.0 mm steel. This machine is build for demanding, hard work.



Rear view of the hydraulic folding machine EVO Heavy Duty.



Option: Cabinet on the left side of the machine for storage of goat's foot segments

The EVO Heavy Duty – strong and powerful

- Bending work with one tool set from thin sheet up to thick sheet
- Economical and reliable folding machine with high operator friendliness
- Optimum flow of forces during bending
- Minimal set-up times
- Innovative and new hydraulic compact drives enable high compression force of 220 t
- High-precision stops thanks to graphic control POS2000 Professional (optionally POS3000)
- Great flexibility and variability due to extensive equipment such as motorized adjustment of lower and bending beams, control systems, stop systems, tool options.

Highlights

- Unique robustness, reliability and repeatability
- Highest precision combined with greatest possible bending performance
- High productivity due to easy handling of the workpieces
- Offline-programming and innovative CAD/CAM concept thanks to Schröder Unfold
- Rear lighting alongside the clamping beam
- Optionally storage space for tools in side panels
- Clamping and folding beam drives on both sides for extremely fast closing of the clamping beam and swiveling of the folding beam

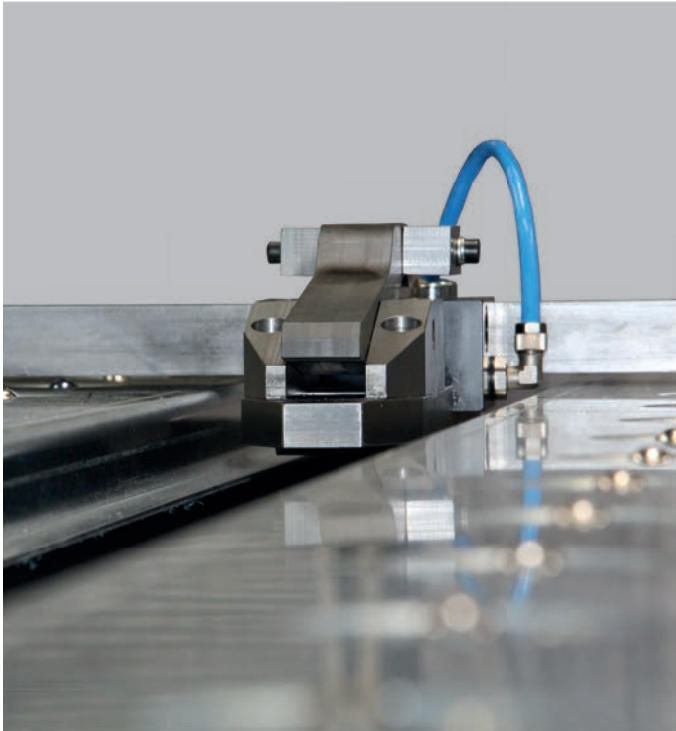


Standard equipment	
Software Control	<ul style="list-style-type: none"> - Graphic control POS 2000 Professional - Monitor in front of the machine, integrated into the casing - rotatable - Radius function - PC Version (external programming), 1. licence - Remote maintenance
Clamping beam	<ul style="list-style-type: none"> - Stroke: 500 mm - Geometry: 45° - Tool clamping, hydraulic (WZS 2500)
Folding beam	<ul style="list-style-type: none"> - Folding beam adjustment, motorized, 60 mm - Tool clamping, mechanic (WZS 1000) - Bending angle, max. 180° - Crowning device, motorized - Folding blade 2-piece, b= 18 mm, h= 110 mm - Reinforced folding blade 2-piece, b= 112 mm, h= 110 mm
Bottom beam	<ul style="list-style-type: none"> - Bottom beam adjustment, motorized, 60 mm - Tool clamping, mechanic (WZS 17000) - Bottom beam blade with finger grooves, min. gauge dimension 30 mm, alternatively bottom beam blade without finger grooves, min. gauge dimension 120 mm
Back gauge	<ul style="list-style-type: none"> - Motorized back gauge MAH 25R, working range 30 - 1600 mm, motorized adjustment via ball screws, sheet support table with balls
Work safety	<ul style="list-style-type: none"> - Foot switch movable on guide rail - Safety enclosure on the left and right of the machine with two shelves each
Others	<ul style="list-style-type: none"> - Motor drive 37 kW - Anchor plates incl. dowels

Special equipment	
Software control	<ul style="list-style-type: none"> - POS 3000 3D Graphic control, DXF-Import and more processor capacity - Schröder Unfold software
Back gauge	<ul style="list-style-type: none"> - Thanks to its modular system, the motorized back gauge MAH 25R 30-1600 mm can be extended to J- or U-gauge: <ul style="list-style-type: none"> - J-shape 30 - 1600/3200 mm - U-shape 30 - 3200 mm - Angle gauge right or left side, adjustable
Clamping beam tools (WZS 2500)	<ul style="list-style-type: none"> - Sharp nose blade „SA“ 45°, R8-R12, divided - Goat's foot blade „C“ 30°, R3,0 , h= 120 mm, foot width 85 mm, clearance 45 mm, segmented incl. corner parts
Safety & Others	<ul style="list-style-type: none"> - Add. equipment for 2-man-operation control in accordance with accident prevention rules required - Safety package Plus: Light barrier package in front, RFID switch through cabinet door - Tool cabinet WZS 2500 <ul style="list-style-type: none"> Insets on the left for storage of goat's foot segments Insets on the right for storage of sharp nose blade SA 45 segment length 500 and 540 mm as well as 2 shelves - Package „operation from the rear“: 2nd monitor on the rear incl. height adjustable support arm system HMA-Lift and rear lighting 3x PROFILIGHT LED, 2nd foot switch on the rear, access security in front via light barriers - Covering of hydraulic unit - Voltage transformer 52 kVA

Special options of the EVO Heavy Duty

The hydraulic folding machine EVO Heavy Duty is able to bend up to 16 mm thick steel sheet effortlessly. In addition it offers the operator a lot of equipment options.



Special gauge option: Pneumatically controlled grippers.



Balls in table for smooth positioning of the product.

Back gauge

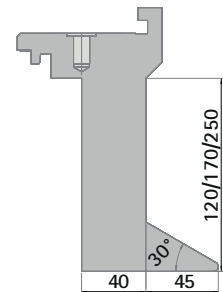
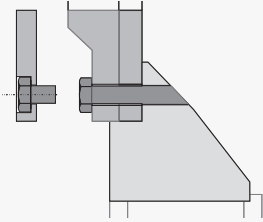
In its standard version the EVO Heavy Duty is equipped with a motorized back gauge and a travel range of 30 - 1,600 mm. It can be adjusted via ball screws. The table surface is equipped with steel ball rollers for easy movement of the work piece. Due to the modular design, the motorized back gauge MAH 25 R can be subsequently extended to a J- or U-shaped version at any time.

As optional equipment, the Schröder Group offers the so-called MAH21 motorized back gauge. With pneumatically controlled grippers it leaves nothing to be desired by the operator. The grippers can grip the sheet precisely and reliably. They are driven by recirculated ball screws.

Tools

The right tool and accessories for every task - with the high-quality Schröder tools you can edge precisely and bend radii with the highest precision.

Tools overview	
Bottom beam tools hardened, nitrated, ca. 1100 N/mm ²	One-piece bottom beam blade without finger grooves (min. gauge dimension 120 mm) or with finger grooves (min. gauge dimension 30 mm)
Folding beam tools WZS 1000 inductively hardened, phosphated, ca. 1100 N/mm ²	Folding blade 2-piece, b = 18 mm h = 110 mm, and reinforced folding blade 2-piece b = 112 mm h = 110 mm
Clamping beam tools WZS 2500 (optional) Hydraulic clamping, surface-treated, inductively hardened, phosphated, ca. 1100 N/mm ²	Sharp nose blade „SA“ 45°, R8-R12, divided No. 1 - L = 1 x 200 mm, No. 2 - L = 4 x 500 mm No. 3 - L = 2 x 520 mm
	Goat's foot segment „C“ 30°, R 3,0 clearance 45 mm, foot width 85 mm No. 1 - L = 25/25/30/35/40/45/50 = 250 mm, No. 2 - L = 14 x 200 mm No. 3 - L = 2 x 100 = 200 mm (corner parts) (Further radii on request)



* WZS = Tool system



Option: Tool cabinet
WZS 2500: cabinet on the left for
storage of goat's foot segments



Option: Tool cabinet
WZS 2500: cabinet on the right for
storage of sharp nose blade „SA“ 45°
segment length 500 & 540 mm

Dimensions and technical data



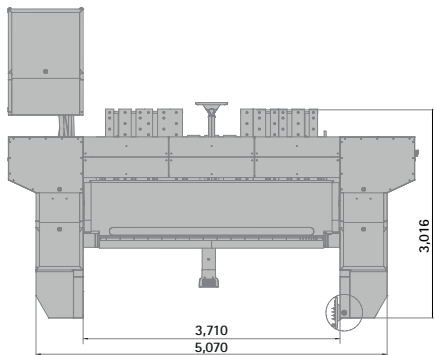
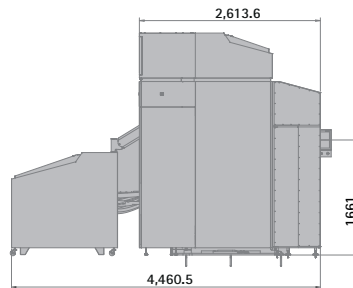
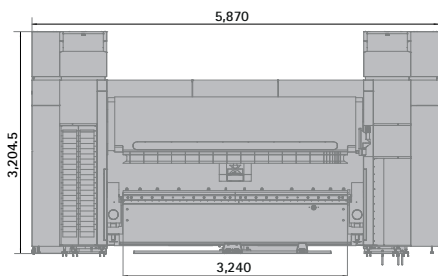
EVO Heavy Duty	3 200 x 16,0
Working length	3 240 mm
Sheet thickness (400 N/mm ²)	16,0 mm
Main drive	37 kW
Machine length	5 870 mm
Machine height max.	3 204,5 mm
Machine depth with back gauge	3 016 mm
Machine depth incl. hydraulic covering	4 460,5 mm
Clamping beam	
Geometry	45°
Stroke	500 mm
Speed	80 mm/s
Folding beam	
Adjustment, motorized	60 mm
Bending angle max.	180°
Bottom beam	
Adjustment, motorized	60 mm



Hydraulic unit positioned on the rear side of the machine

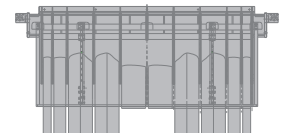
Hydraulic unit on rollers serves as complete unit with pressure monitoring and proportional valves for upper beam and bending beam.

Dimensions: EVO Heavy Duty

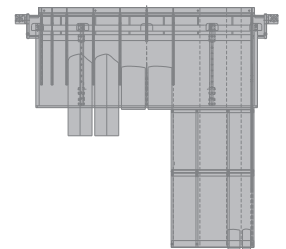


Back gauge extension right and/or left:

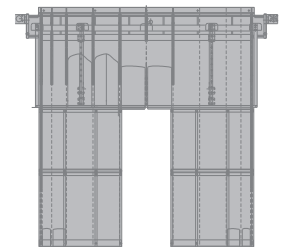
- J-shape 3 200/1 600, 4 x 800 mm
- U-shape 3 200, 4 x 800 mm
- Sheet support table with grippers, pneumatically controlled via ball screws (optionally repositionable), travel range 2000 mm and steel balls in table



Standard gauge MAH 25R



J-shape 3200/1600



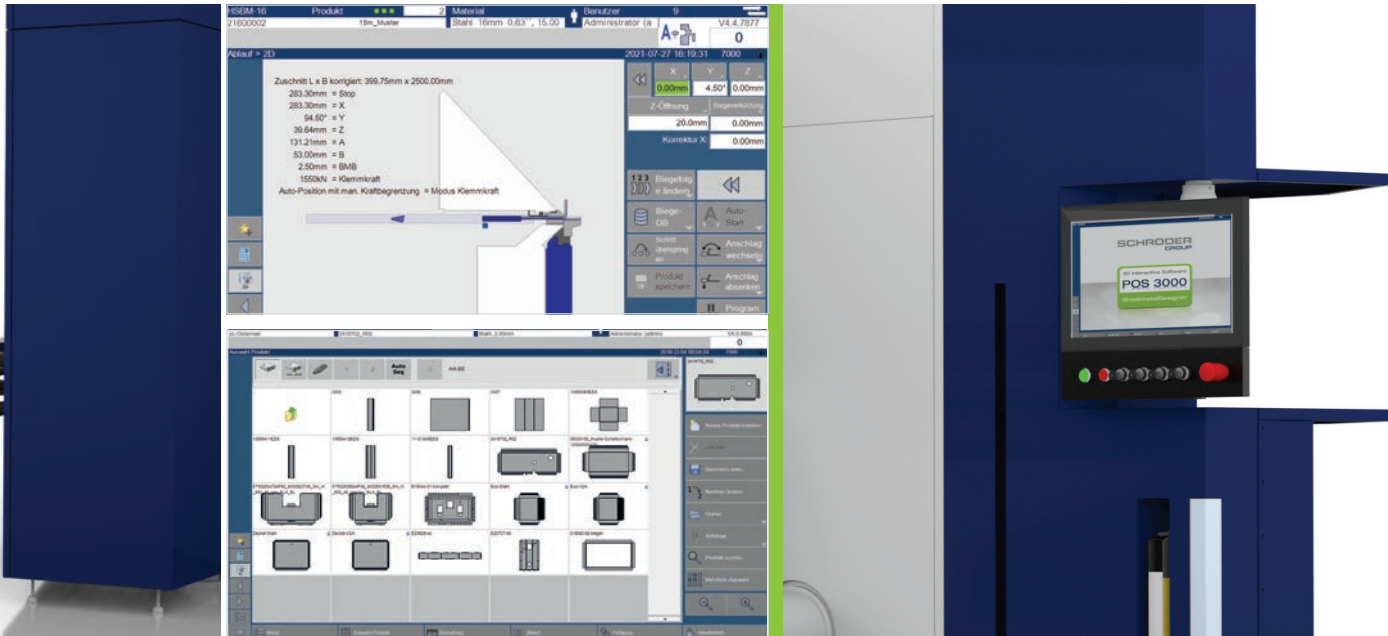
U-shape 3200

All dimensions in mm.

All information are provided as a guide and may be subject to change at any time.

Standard colour: RAL 7035 light grey, RAL 5003 sapphire blue. Special painting at an extra charge.

Standard: POS 2000 Professional



Graphic control POS 2000 Professional: the result always in front of your eyes – from the first steps to simulation

Visualized quality: POS 2000 Professional graphic control

The folding machine EVO Heavy Duty owes its high processing speed, precision and efficiency to the powerful software control POS 2000 Professional with touchscreen. This software is known in the industry as „the“ software control for folding machines - proven and fully developed.

The POS 2000 Professional visualizes every processing step - through it, the folding machine, work piece and tools are schematically shown. The product is confirmed in a virtual mode prior to putting the sheet on the back gauge table, so the operator can form the part with 100% confidence. All necessary actions such as turning a sheet are displayed in separate steps.

In short: Whether programming, running a simulation for a feasibility check or time study, or manipulating a part on the machine, the POS 2000 Professional supports your operation like no other can.

Option: POS 3000 3D Graphic control

- 3D Graphic control incl. schematic display of the machine, tools and work piece
- Intuitive, visual touchscreen-programming
- 3D-bending simulator for visual program control
- Cycle time calculator
- CAM-connection
- ERP/PPS-interfaces
- DXF, BPX and Geo-import

Option:

- External programming (POS 3000 PC-Version)
- Unfold software „SCHRÖDER Unfold“



Schröder Group

The Schröder Group consists of Hans Schröder Maschinenbau GmbH, which is located in Wessobrunn, Germany, SCHRÖDER-FASTI Technologie GmbH, located in Wermelskirchen, Germany and the SMU GmbH, located in Leinburg-Weißenbrunn.

Founded in 1949, Hans Schröder Maschinenbau GmbH unifies traditional and modern approaches in machine building: Successfully managed as a quality and customer-oriented, family-owned company, Hans Schröder Maschinenbau is specialized in the development of modern machine concepts for bending and cutting sheet metal.

The successful integration of the Fasti Company in 2006 and its worldwide presence make the Schröder Group one of today's leading providers of machines for bending, cutting, beading, flanging, and circular bending all types of sheet metal. The company's precision machines range from proven solutions for craftsmen to innovative, high-performance machines for automatic industrial production processes. 2021 the Schröder Group was expanded by the tool manufacturer SMU GmbH. Overall, the Schröder Group currently employs more than 300 people at various locations at home and abroad.

All information provided as a guide only
and may be subject to change at all times.
HSM 210830EN

Hans Schröder Maschinenbau GmbH
Feuchten 2 | 82405 Wessobrunn-Forst | Germany
T +49 8809 9220-0 | F +49 8809 9220-700
E info@schroedergroup.eu
www.schroedergroup.eu

SCHRÖDER
GROUP