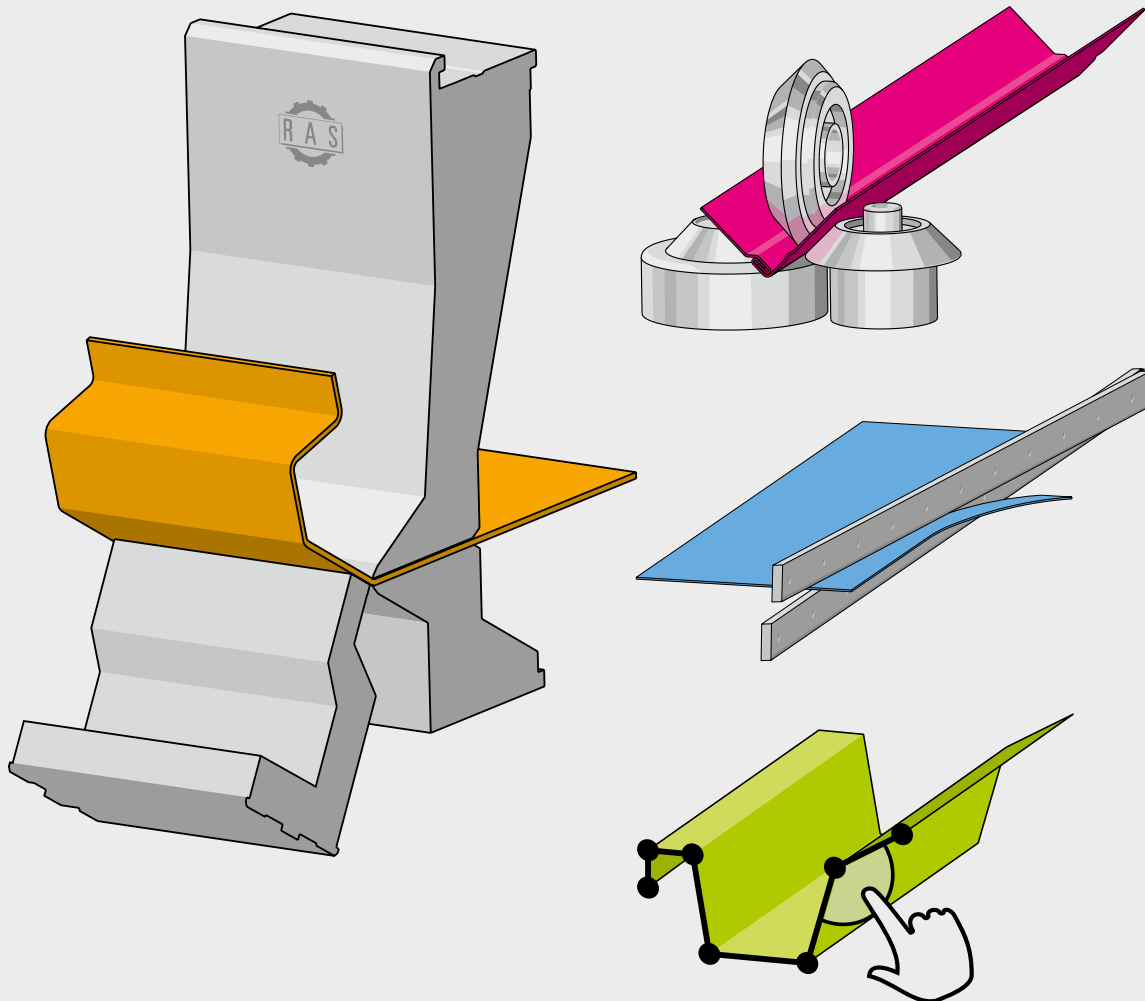


Production Program



CUTTING

BENDING

FORMING

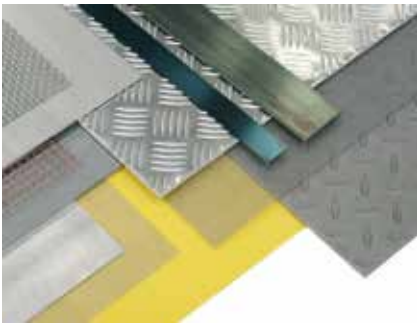
SOFTWARE

POWERcut 2



Simple and clear menus on the 15" touch monitor.

The sheet support system guides even thin materials exactly to the CNC backstop.



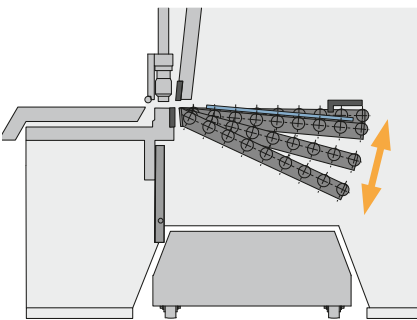
The POWERcut2 swing beam shears cover a wide range of materials.



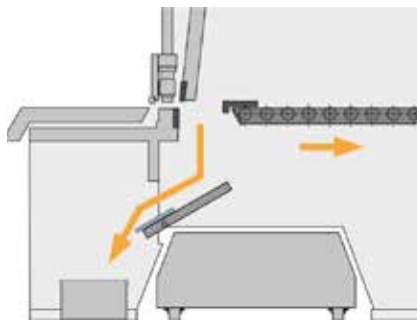
Front stops (available also with a precision scale) allow an accurate part positioning.



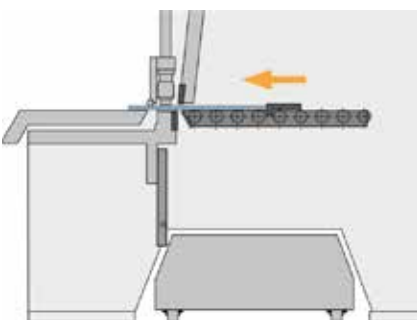
Deep finger pockets for best material utilization.



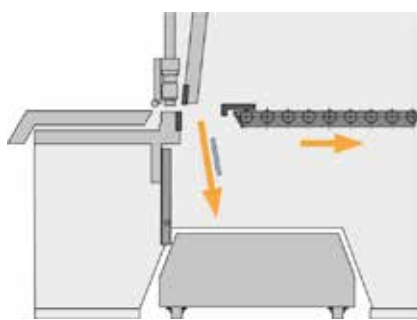
After the cut, the sheet support system can move into four different part delivery positions. down quietly and gently.



Small parts up to 200 x 500 mm can be delivered in a container in front of the machine.



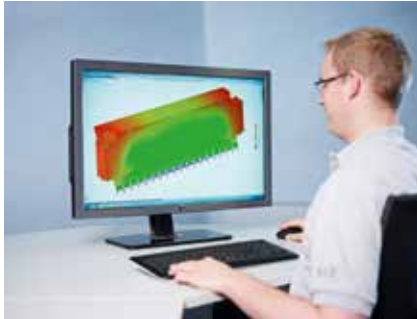
Huge time saving as cut pieces can be returned to the operator.



Trim cuts fall into the large-volume scrap container. It can be pulled out of the machine to the side or to the rear.



Technical data	Cutting length max.	Sheet thickness max.	Gauging depth
POWERcut 2 RAS 86.43-2	4040 mm	5.0 mm	5 - 1000 (1500) mm
POWERcut 2 RAS 86.33-2	3190 mm	6.3 mm	5 - 1000 (1500) mm



Design



Sawing



Plasma cutting



Milling



Turning



Grinding



Welding



Powder coating



Assembly



Electrical assembly



Quality inspection



RAS - Regional production for global sustainability



Headquarters in Sindelfingen. In the foreground „Steel object“.



Effringen - factory and artwork



RAS Systems LLC in Georgia, USA



Founder Wilhelm Reinhardt



Managing Directors Rainer Stahl, Matthias Huber und Willy Stahl

All sheet thickness refer to 400 N/mm²
tensile strength. Subject to changes.
Pictures may show options.