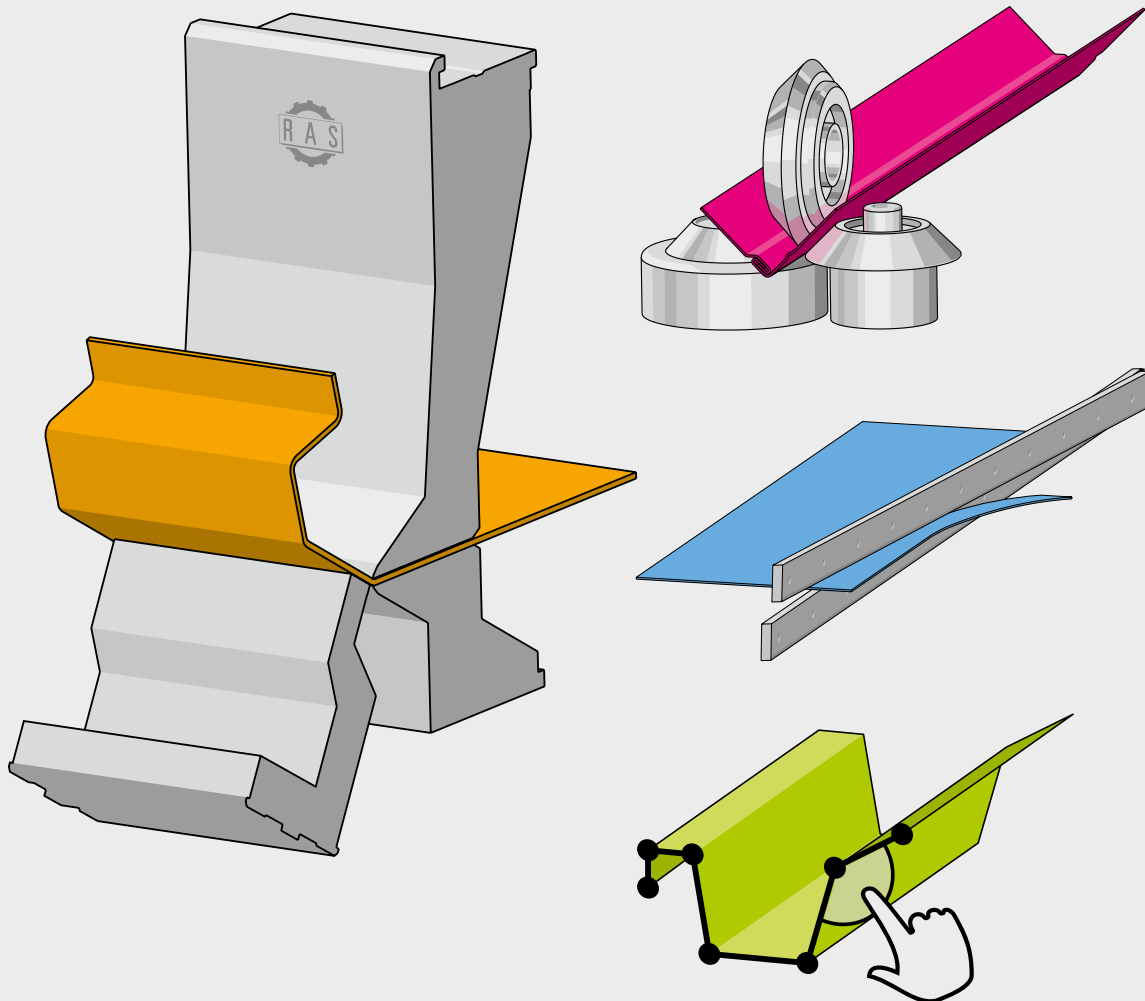


# Production Program



CUTTING

BENDING

FORMING

SOFTWARE

# RAS 11.35

# RAS 11.15



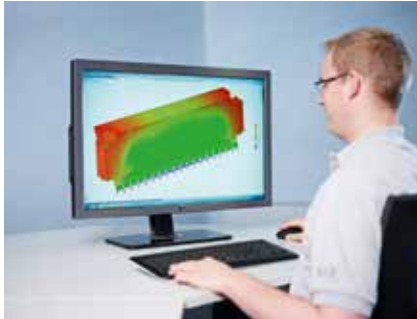
9 pairs of wheels included-



Swaging wheels



Technical data	Sheet thickness max.	Wheel center distance	Working depth max.
RAS 11.35 (Motor)	1.25 mm	50 mm	200 mm
RAS 11.15 (Manual)	1.25 mm	50 mm	200 mm



Design



Sawing



Plasma cutting



Milling



Turning



Grinding



Welding



Powder coating



Assembly



Electrical assembly



Quality inspection



RAS - Regional production for global sustainability





Headquarters in Sindelfingen. In the foreground „Steel object“.



Effringen - factory and artwork



RAS Systems LLC in Georgia, USA



Founder Wilhelm Reinhardt



Managing Directors Rainer Stahl, Matthias Huber und Willy Stahl

All sheet thickness refer to 400 N/mm<sup>2</sup>  
tensile strength. Subject to changes.  
Pictures may show options.