

## PRO-40 PBS 2 | HEAVY-DUTY STATIONARY PIPE BEVELLING MACHINE

**PRO-40 PBS 2** is a heavy-duty stationary pipe beveling machine designed for high-precision weld preparation of large-diameter pipes, tanks and pressure vessels.

With a capacity of up to  $\varnothing 1016$  mm (40") and support for pipes weighing up to 10 tonnes, it is an ideal solution for heavy fabrication, pipeline projects and energy-sector applications.

### Typical Applications:

- Pipeline prefabrication and installation
- Pressure vessels and tanks
- Offshore and heavy fabrication
- Power generation and energy sector
- Shipbuilding and large steel structures

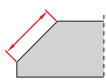
### Key Capabilities:

- External beveling
- Internal beveling
- Pipe facing / squaring
- J-groove weld preparation (R6, R8) - option
- Oval pipe machining - option



### Features and benefits:

- **Wide diameter range ( $\varnothing 200-1016$  mm / 8-40")** covers most heavy industry pipe applications
- **Continuously adjustable bevel angle  $-60^\circ$  to  $60^\circ$**  for OD and ID beveling enables flexible weld preparation on one machine
- **3 phase IE3 motor (spindle power 2200 W)** delivers high torque and stable cutting performance, even on thick walls and hard to machine materials
- **Built in chain positioning arms** ensure fast, repeatable set up and correct pipe alignment, significantly reducing preparation time
- **Optional oval pipe tracking attachment** guarantees consistent land / root face thickness on oval or deformed pipes
- **Maximum pipe weight up to 10,000 kg** when equipped with optional steel wheels
- **Overload protection** protects the motor and drivetrain under demanding cutting conditions
- **Optional air cooling system** lowers the temperature of the machined edge, blows away chips and extends insert life by up to 50%



Max bevel  
width 45 mm



Min. wall  
thickness 5 mm



Bevel angle  
from  $-60^\circ$  to  $60^\circ$



Pipe OD  
200-1016 mm



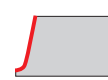
Facing off



Pipe ID  
beveling



Pipe OD  
beveling



Pipe J-groove  
beveling



Air cooling  
system

## ■ Milling Heads & Cutting Inserts

The PRO-40 PBS 2 uses replaceable-insert milling heads for efficient and economical machining.

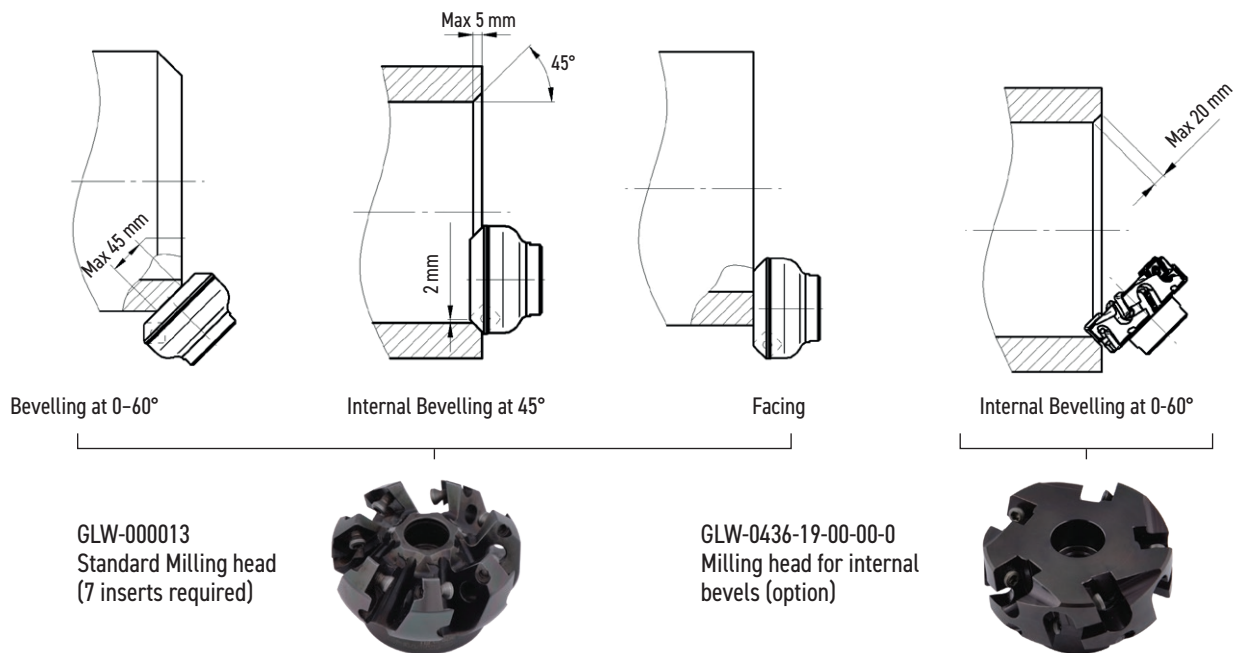
### Standard and Optional Milling Heads







- Standard milling head – OD beveling (0–60°), ID beveling, facing
- ID milling head (option) – extended internal beveling capability
- J-groove milling heads (option) – R6 or R8

### Cutting Inserts

Available carbide and cermet inserts allow optimisation for:

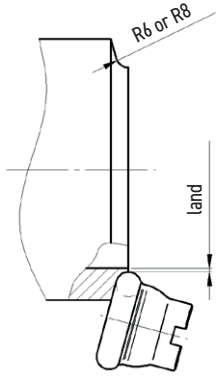
- structural (mild) steels
- alloy and wear-resistant steels (e.g. Hardox)
- stainless and acid-resistant steels
- aluminium and non-ferrous materials



Product	Product Code / Description	Specification
	PLY-000282 (standard) Carbide cutting insert (SEMT) for Mild steel	<ul style="list-style-type: none"> <li>• mainly structural steels</li> <li>• edges not prepared for machining, irregular shapes may be left after thermal cutting</li> <li>• heavy impact work in unstable cutting conditions</li> </ul>
	PLY-000591 (option) Carbide cutting insert (SEMT) for Mild steel	<ul style="list-style-type: none"> <li>• mainly structural steels</li> <li>• also suitable for machining certain alloy steels (e.g. Hardox 400)</li> <li>• edges pre-prepared for machining</li> <li>• work in more stable conditions</li> </ul>
	PLY-000781 (option) Cermet cutting insert (SEMT) for Mild steel	<ul style="list-style-type: none"> <li>• mainly structural steels also aluminium</li> </ul>
	PLY-000835 (option) Carbide cutting insert (SEMT) for Alloy steel / Stainless steel	mainly hard-to-machine alloy steels such as stainless, acid-resistant, tool and hardened steels
	SRB-000311 (option) Insert fixing screw	for cutting inserts: PLY-000282, PLY-000591, PLY-000781, PLY-000835
	OLJ-0505-09-00-00-0 (0.5 kg) OLJ-0505-10-00-00-0 (1.0 kg) OLJ-0505-11-00-00-0 (5.0 kg)	HD-CUT OIL 1 - fluid for hard machinable steel including acid resistance and stainless steel

## ■ Cutting inserts and milling heads for J-groove bevelling - option

We offer two types of milling heads and cutting inserts for R6 and R8 J-groove bevelling.



GLW-0518-07-03-00-0  
J-groove R6 milling head



GLW-0518-07-04-00-0  
J-groove R8 milling head



Product code	Description	Product code	Description
PLY-000422	Carbide cutting insert (RDGT-R6) for Mild steel	PLY-000424	Carbide cutting insert (RDGT-R8) for Mild steel
SRB-000297	Fixing screw for J-groove R6 cutting insert	SRB-000367	Fixing screw for J-groove R8 cutting insert

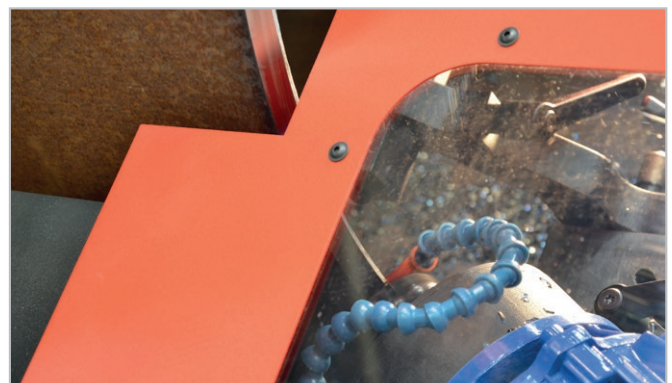
## ■ Chain positioning arms

Built-in chain positioning arms enable quick and proper positioning of the chain on the pipe being machined. They reduce set-up time and ensure that the pipe is held in the correct position during machining. The arms are suitable for pipes with a minimum 540 mm OD.



## ■ Air cooling system

This optional system reduces the temperature of the machined edge and helps to increase the lifetime of the inserts by up to 50%. It jets away the chips and includes pressure reducer. Product code: ZSP-0811-08-00-00-0.



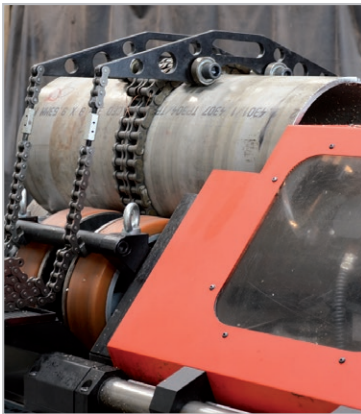
## Optional Accessories (by application)

### Short Pipe Beveling

Clamping device for short pipes  
400-830 mm in length  
DCS-0436-99-00-00-0

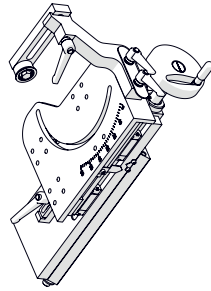


- recommended to use 2 pieces

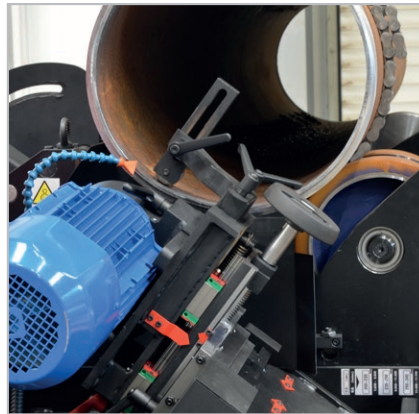


### Oval Pipe Machining

Oval pipe tracking attachment  
WSP-0811-10-00-00-0

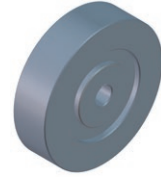


- enables consistent land/root face thickness
- available either with brand new machine or for retrofitting



### Heavy Pipe Support

Steel wheel (1 pc)  
KOL-0436-23-00-00-0



- 4 pcs required when machining steel pipes weighing between 6 and 10 tonnes



## Stainless Steel Processing

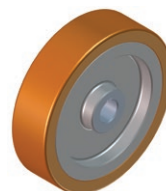
- dedicated accessories to protect the stainless steel pipes from contamination



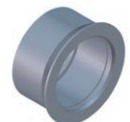
LNC-0436-25-01-00-0  
Set of guiding chains  
for stainless steel



DCS-0436-25-10-00-0  
Clamping device for short  
stainless steel pipes 400-830 mm  
in lengths



KOL-000132  
Rubber coated wheel (1pc)  
(2 pcs needed)



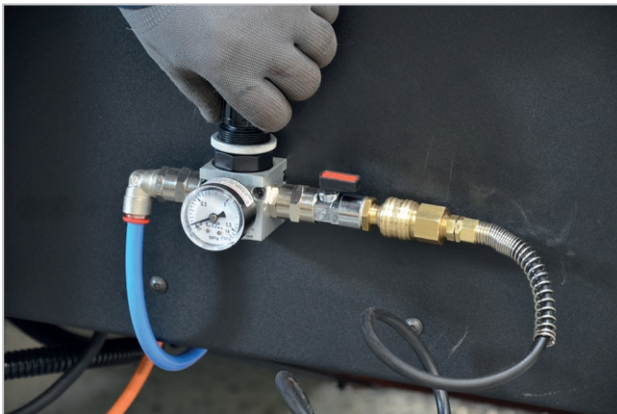
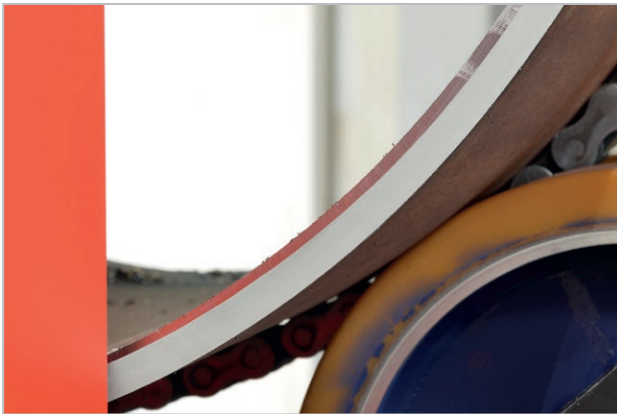
RLK-0436-25-11-00-0  
Stainless steel roll for oval  
pipe tracking attachment

For the customer's convenience a comprehensive set for stainless steel is available.

This set includes four products as shown above: one of each, except for the rubber coated wheel, of which there are two pieces.

The product code for the set is ZST-0436-25-00-00-0.

■ Engineered with the highest quality and user comfort in mind



Air cooling system



J-groove R8 pipe end preparation



Practical depth indicator



Oval pipe tracking attachment

## PRO-40 PBS 2 TECHNICAL SPECIFICATIONS

Voltage	3-400 V, 50/60 Hz, PE, 3-480 V, 50/60 Hz, PE
Total power	2500 W
Spindle power	2200 W
External pipe diameter range	200-1016 mm (7-7/8" - 40") pipes longer than 830 mm (32" - 43/64") 200-600 mm (7-7/8" - 23-5/8") pipes 400-830 mm long (15-3/4" - 32-43/64")
Maximum allowed pipe weight	10 000 kg (22 000 lbs)*, if active support equipped with optional steel wheels
Minimum pipe wall thickness	5 mm (13/64")
Feed rate	0,1-1,1 m/min
Rotator speed	0.1-1.2 rpm
Spindle rotational speed	1400 rpm (for 50 Hz) 1680 rpm (for 60 Hz)
Bevel angle	0-60° with continuous angle adjustment
Max OD bevel width	45 mm (1-49/64")
Max ID bevel width	5 mm (1/4") standard, up to 20 mm (13/16") - option
Beveling type „J”	YES - option
„J” type beveling radius	6 mm (1/4") or 8 mm (5/16")
Oval pipe tracking attachment	YES - option
Protection level	IP 20
Air cooling	YES - option
Protection class	I
Machine weight	1170 kg (2580 lbs)
Product code w/o oval pipe tracking attachment	UKS-0811-10-40-00-0
Product code with oval pipe tracking attachment	UKS-0811-10-40-01-0

\* 6000 kg (13 200 lbs) when active support equipped with standard rubber coated wheels



Outer pipe beveling



J-groove pipe end preparation (R6 or R8)



### Standard shipping set:

- stationary pipe beveling machine
  - active support (with rubber coated wheels)
  - passive support (with steel wheels)
  - standard milling head with 7 cutting inserts
  - set of guiding chains for steel pipes
  - wooden transport box
  - tool set
  - Operator's manual
- 
- oval pipe tracking attachment, if model UKS-0811-10-40-01-0 is ordered



Protective shield and internal lighting increase safety and comfort of the operator



The chain ensures positive axial rotation. Chain length can be adjusted to fit pipe diameters ranging from 200 to 1016 mm

All information is subject to change without notice. 26.05



PROMOTECH Sp. z o.o.  
Elewatorska 23/1  
15-620 Białystok, POLAND  
Phone +48 85 678 34 05  
sales@promotech.eu



Your local dealer:

